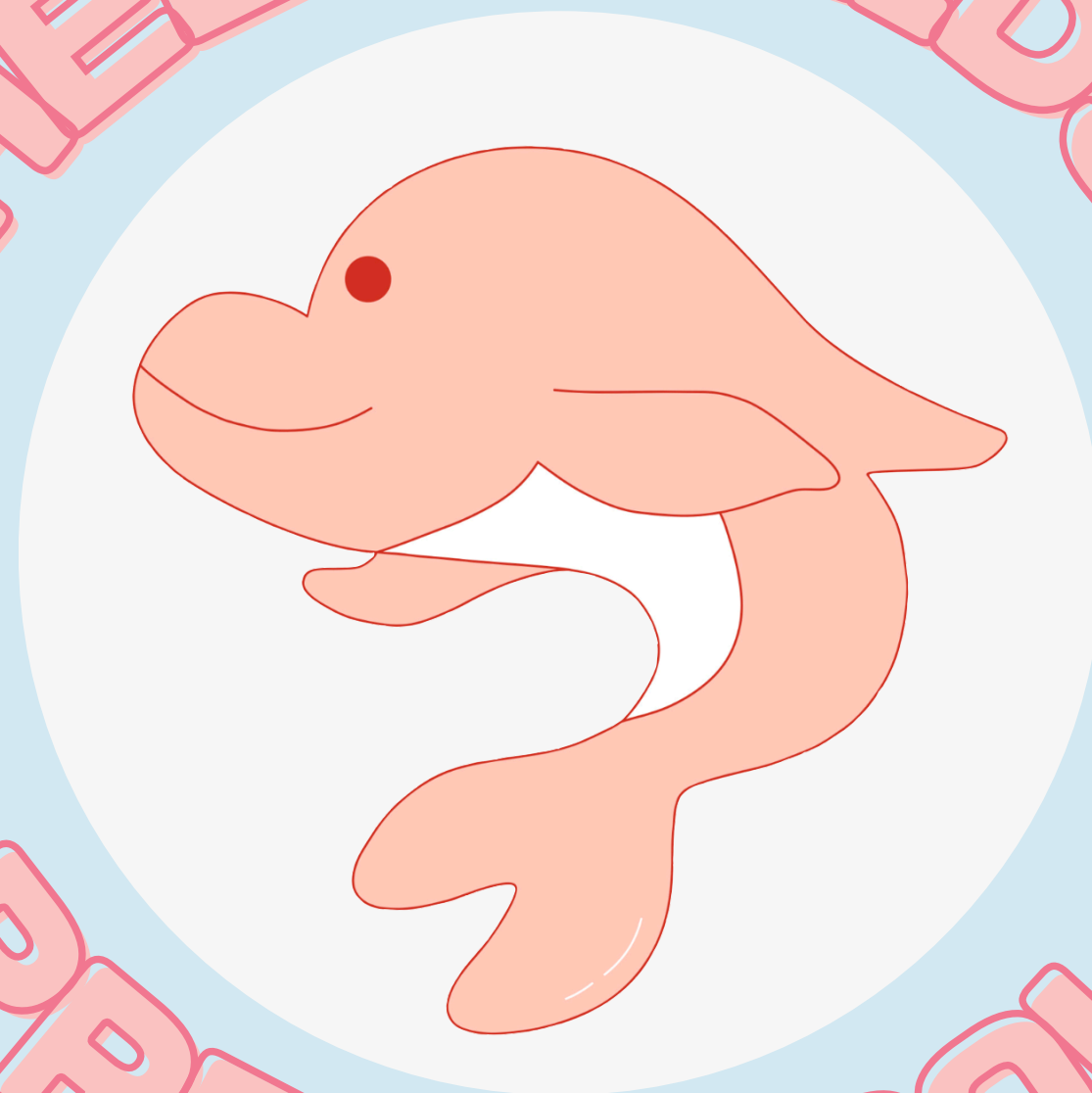


# HELLO KIDS

## parent packet

# PRESCHOOL



BLUE SCHOOL  
2025-2026

PHONE 03-5431-0411  
FAX 03-5431-0416  
[www.hello-kids.co.jp](http://www.hello-kids.co.jp)



# The Goal of Our Curriculum

*Our goal is to help children become independent, self-confident, impulsive learners.*

We are teaching them to learn all through their lives. We are allowing them to learn at their own pace and in ways that are best for them. We are giving them good habits and attitudes, particularly a positive sense of self, which will have a tremendous impact on the rest of their life.

## Social

To help children feel comfortable at school, trust new environments, make friends, and feel as if they are a part of a team.



## Cognitive

To help children become confident learners by allowing them to try their own ideas and experience success, and by helping them acquire learning skills such as the ability to solve problems, ask questions, and describe their ideas, observations, and feelings.



## Emotional

To help children experience pride and self-confidence, develop independence and control, and have a positive attitude towards life.



## Physical

To help children increase their fine and gross motor skills and feel confident about what their bodies can do.



The activities we plan for children, the way we organize the environment, select toys, and materials, plan the daily schedule, and talk with the children, are all designed to accomplish the goals of our curriculum and give your child a successful start in school.



# ハローキッズのカリキュラムの目標

ハローキッズプリスクールの目標は、子供たちが自立し、自信を持った好奇心あふれる学習者になるよう手助けすることです。

私たちは子供たちの生活のすべての面でどのように学ぶかを子供たちに教え、子供たちのペースで、なおかつ最の方法で学べるようにしたいのです。  
子供たちが、よりよい学習姿勢と態度、特に自分に対して積極的な見方をもてるようにしてあげたいのです。それが生涯に渡って自信を持つことにつながるからです。

ハローキッズのカリキュラムには、発達のすべての分野の目標が提示されています。

## 社会面

スクールでくつろいだ気分になれるようにすることで、新しい環境を信じ、友達を作り、  
自分がグループの一員であると思えるようになる。



## 認識面

自分のアイディアを試し、成功の経験を持ち、問題解決能力や質問する能力、自分の考えや観察したこと、  
感情などを描写する能力を身につけることにより、学ぶスキルを育むよう手助けをする。



## 感情面

プライドとセルフエスティーム（自尊心）が持てるようにすることで、自立心と自己抑制心  
を育み、人生への積極的な姿勢を身につける。



## 運動面

指先や身体全体の運動能力を伸ばし、自分の肉体ができることへの自信を持つようにする。



子供たちのために考え出すアクティビティの数々、環境設定、教具教材の選定、毎日の計画、子供との対話  
などは、すべてこのカリキュラムのゴールを達成し、子供たちが達成感に満ちスクール生活を毎日送れる  
ようにするためのものです。

# DEVELOPMENTAL GOALS FOR STUDENTS

updated: Apr, 2025

## Social Development

- To acquire social skills (S1)
- To cooperate with others (S2)
- To respect yourself (S3)
- To respect others (S4)
- To respect the classroom (S5)
- To appreciate and value differences (S6)



## Emotional Development

- To be able to express feelings (E1)
- To develop self-control (E2)
- To develop self-understanding (E3)
- To develop a positive self image (E4)
- To develop the ability to stick to a task to completion (E5)



## Cognitive Development

- To recognize objects, people, and self (C1)
- To imitate the actions of others (C2)
- To develop decision-making skills (C3)
- To develop problem-solving skills (C4)
- To develop language skills (C5)
- To develop math skills (C6)
- To enhance creativity (C7)
- To begin to understand and expand knowledge of scientific and mathematic concepts. (C8)



## Language Development

- To be able to express their feelings (L1)
- To be able to introduce themselves (L2)
- To be able to, at minimum, read simple words (L3)
- To be able to count and read numbers 1-100 (L4)
- To be able to recognize the letters A-Z (L5)
- To be able to write uppercase and lowercase letters (L6)
- To be able to name objects, animals, foods, etc. (L7)
- To be able to use positive social language (L8)



## Physical Development

- To refine sensory abilities (P1)
- To develop gross motor skills (P2)
- To develop fine motor skills (P3)
- To develop hand-eye coordination
- To refine visual discrimination
- To refine listening skills





# それぞれの発達分野における目標

updated: Apr, 2025

## 社会面の発達のための目標

- 社会的なスキルを獲得する。S1
- 他人と協力する。S2
- 自分を尊重する S3
- 他人を尊重する。S4
- 教室を尊敬する。S5
- 違いを認め、評価する。S6



## 感情面の発達のための目標

- 感情を表現できるようになる。E1
- セルフコントロールを発達させる。E2
- 自分への理解（self-understanding）を発達させる。E3
- ポジティブなセルフイメージを発達させる。E4
- ひとつのことを完成させる能力を発達させる。E5



## 認識面の発達のための目標

- 物、人そして自分を認識する。C1
- 他人の真似をする。C2
- 意思決定の能力を伸ばす。C3
- 問題解決の能力を伸ばす。C4
- 言語能力を伸ばす。C5
- 組み合わせ、同じ物を選ぶこと、分類などの算数に必要な能力を伸ばす。C6
- 創造性を伸ばす。C7
- 科学や理科、算数の基礎的概念を理解し始める。例えば、重力、原因と結果、C8
- バランス、サイズ、形、色、重量、測量など。C9



## 言語能力〔英語〕の発達のための目標

- 感情や気分を表現できる。L1
- 自分や家族のことを紹介できる。L2
- 簡単な言葉を読めるようになる。L3
- 数字の1～100を読めるようになる。L4
- アルファベットのA～Zが認識できる。L5
- アルファベットの大・小文字がトレースなしで書ける L6
- 簡単な足し算、引き算ができる。L7
- 動物の名前がいえる。L8
- 簡単な対話をしっかりとできる。L9



## 運動面の発達のための目標

- カンを磨く。P1
- 身体全体の運動能力を発達させる。P2
- 指先の運動能力を伸ばす。P3
- 目と手先の運動能力を伸ばす。
- 目の識別能力を磨く。P4
- 聞く能力を磨く。P5
- リーディング・レディネス（リーディングを学び始めるための準備）のスキルを身に付ける。(6)



# Blue Class Daily Schedule

(Ages: 18 months to 3 y/o)

**08:00~09:45 Early Arrival**

**09:45~10:00 Arrival Time**

**10:00~10:20 Welcome Activity**

**10:20~10:40 Circle Time\***

**10:40~11:00 Bathroom > Reading Time**

**11:00~11:20 Music & Movement**

**11:25~12:00 Park Time**

**12:00~12:50 Lunch Time**

**12:50~13:20 Free Play Time\***

**13:20~14:00 Rest (Nap) Time**

**14:00~14:15 Snack Time**

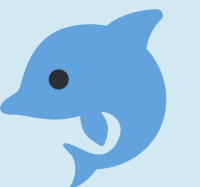
**14:15~14:30 Pick Up Time**

## To Do's:

- Early Arrival: (monthly registration or early reservation need ) Free Play, educational DVD, coloring , etc.
- Welcome Activity: Blocks, color balls, simple writing practice , coloring, etc.
- Circle Time: Greetings, practice introductions, monthly topic

## ★ Don't forget!

- Your Blue File
- Your school cap
- A Positive Attitude !



# Blue Class Daily Schedule

(Ages: 18 months to 3 y/o)

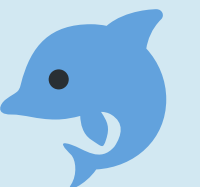
08:00~09:45	早朝保育
09:45~10:00	子供たちの到着
10:00~10:20	ウェルカムアクティビティ*
10:20~10:40	サークルタイム*
10:40~11:00	トイレ休憩 > リーディング
11:00~11:20	歌とダンスタイム
11:25~12:00	公園
12:00~12:50	ランチタイム
12:50~13:20	自由遊び*
13:20~14:00	お昼寝・休憩
14:00~14:15	おやつタイム
14:15~14:30	お迎えタイム

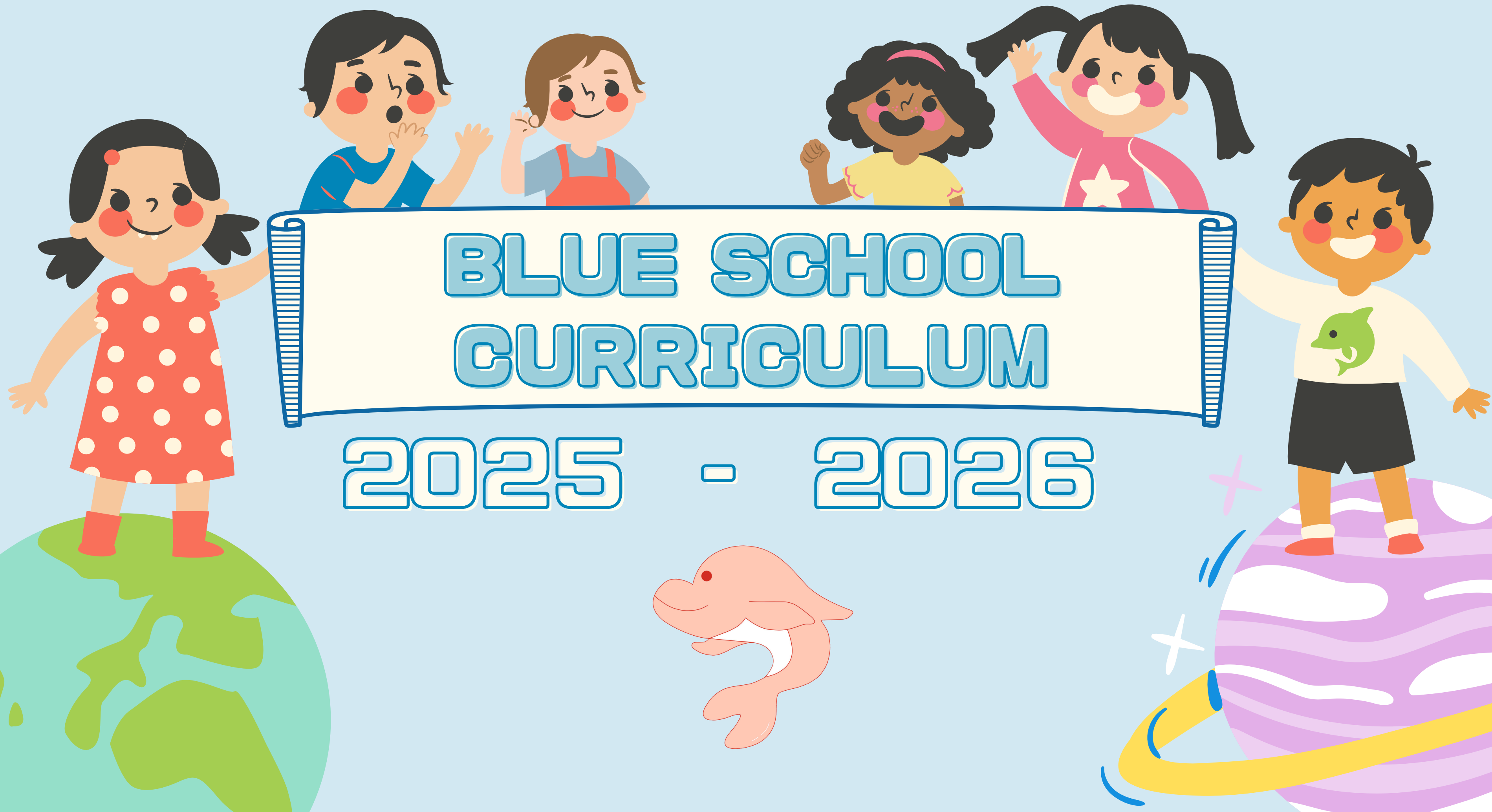
## To Do's:

- 早朝保育: 子供たちは自由遊びやクラフト、塗り絵やDVD観賞、本を読むなど興味のある活動に参加します
- ウェルカムアクティビティ: ブロック、カラーボール、粘土、塗り絵、パズルなど先生と対話しながら遊ぶ、シェアする、片付けるなど。
- サークルタイム: 挨拶や自己紹介、天気や数字、感情表現など

## ★ Don't forget!

- ブルーファイル
- スクールキャップ







# APRIL & MAY

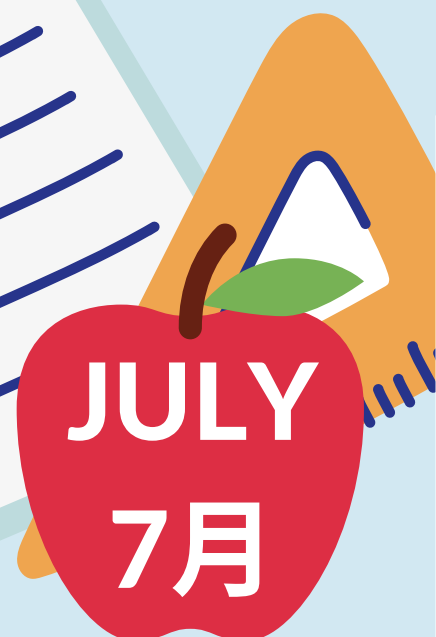
“A LITTLE PROGRESS EACH DAY  
ADDS UP TO BIG RESULTS.” – SATYA NANI



TOPIC	LANGUAGE	DEVELOPMENT	ACTIVITIES	EVENTS
<p>Opening up to colors Wow! It's beautiful songs : Find something.. Spring time “A beautiful butterfly” “Time to wake up” books for story time Songs/1-6,13,15,16</p>	<p>(color)...please! It's (It's not) blue!/red! Here you are...Tank you! I have...(color) It's (not) here Daily classroom expressions</p>	<p>[S1] Social Skills [E1] Express Feelings [C2] Imitate the actions of others [L1] Express feelings [P5] Refine visual development</p>	<p>Flower planting  Make a flower</p>	<p>Spring Picnic  Golden Week</p>
<p>Opening up to Numbers There is so many! Counting objects Numbers counting &amp; Age Colors k +Objects Songs : “Tiny boppers” book for story time Songs/8,11,25,43</p>	<p>This one ? Yes, it's this one. No, not this one.  (number)...please I have it./I don't have it. Help me please!</p>	<p>[S2] Cooperate with others [E2] Develop Self Control [C1] Recognition [L1] Express feelings [P4] Develop Hand- eye coordination</p>	<p>Mother's Day Craft  Growth Check</p>	<p>Golden Week</p>

# JUNE & JULY

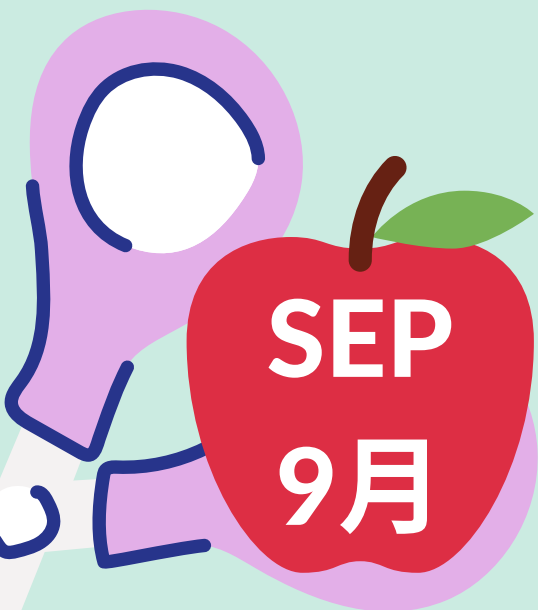
“NEVER LET THE FEAR OF STRIKING OUT  
STOP YOU FROM PLAYING THE GAME” – BABE RUTH



TOPIC	LANGUAGE	DEVELOPMENT	ACTIVITIES	EVENTS
<p>Opening up to the body parts</p> <p>Where is your head?</p> <p>“A teddy bear”</p> <p>“With my eyes”</p> <p>books for story time</p> <p>Alphabet recognition</p> <p>Songs/9,10,17,25,43</p>	<p>Where is your ... (body parts)?</p> <p>I found it!</p> <p>What color?</p> <p>How many...?</p> <p>Can you see...?</p> <p>Yes (No), I can (can't)</p> <p>I can...</p>	<p>[S3] Respect Yourself</p> <p>[E2] Develop Self Control</p> <p>[C1] Recognition</p> <p>[L7] Name objects, animals, etc</p> <p>[P2] Develop Gross Motor Skills</p>	<p>Rainy Season Craft</p> <p>Fathers's Day Craft</p> <p>Evacuation Drill</p>	<p>Sport's Day</p>
<p>Opening up to foods</p> <p>Do you like hamburgers?</p> <p>I like.../I don't like...</p> <p>“What's in the cart?”</p> <p>book for story time</p> <p>Songs/17,18,21,22,43</p>	<p>Do you like...?</p> <p>I like it.</p> <p>I don't like it.</p> <p>I don't know.</p> <p>It's mine!</p> <p>It's not for you.</p> <p>possession</p>	<p>[S4] Respect Others</p> <p>[E2] Develop Self Understanding</p> <p>[C7] Enhance Creativity</p> <p>[L8] Positivity</p> <p>[P6] Refine Listening Skills</p>	<p>Summer Painting</p> <p>Cooking</p> <p>Growth Check</p>	<p>Star Festival Craft</p> <p>Summer School</p>

# AUGUST & SEPTEMBER

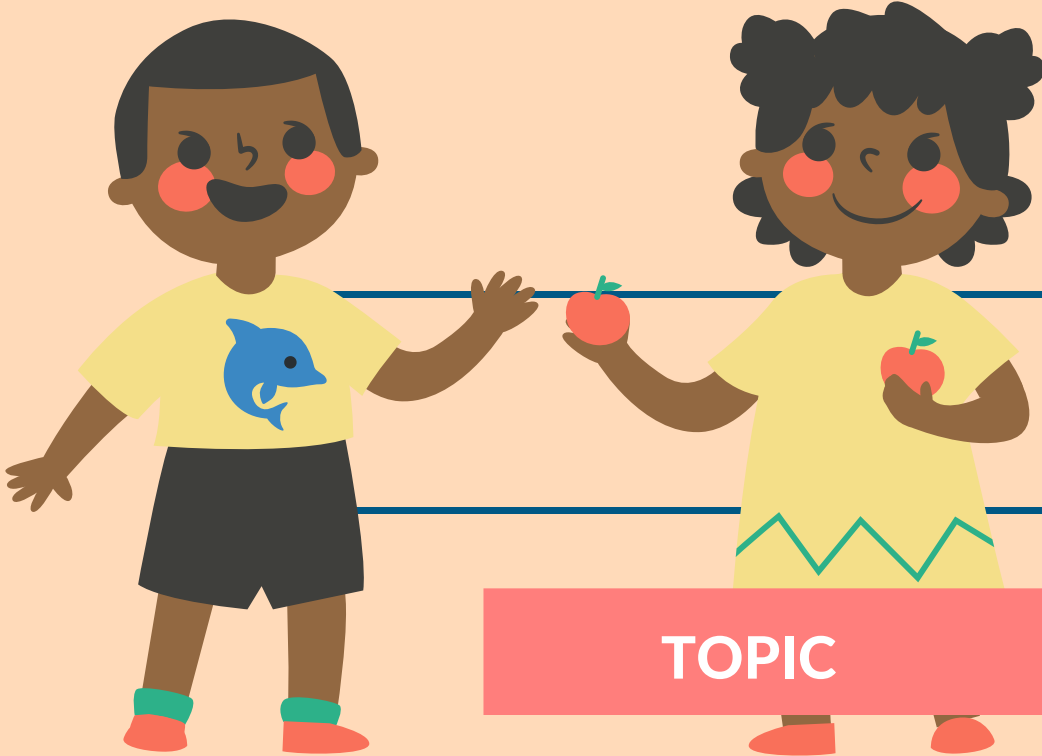
THE MORE THAT YOU READ, THE MORE THINGS YOU WILL KNOW,  
THE MORE THAT YOU LEARN, THE MORE PLACES YOU'LL GO." – DR. SEUSS



TOPIC	LANGUAGE	DEVELOPMENT	ACTIVITIES	EVENTS
<p>Opening up to review</p> <p>"Tiny boppers" and "What's in the cart?" books for story time</p> <p>Songs/1-6,8-11,13 15-18,21,22,15,43,44</p>	<p>What do you think?</p> <p>What color is...? (Food &amp; Objects)</p> <p>How many ...can you see? (Objects)</p> <p>Classroom expressions</p>	<p>[S3] Respect Yourself [E3] Develop Self Understanding [C2] Imitate the Actions of others [L2] Introduce themselves [P3] Fine Motor Skills</p>	<p>Growth Check</p> <p>Evacuation Drill</p>	<p>Summer School</p> <p>Pink School Observation</p>
<p>Opening up to feelings I care about you! How are you? I am...(feeling) "The color monster" book for story time ★Sharing stories★ Songs/12,14,20,26,46</p>	<p>How are you ? I am...(feeling)</p> <p>Are you okay? No, thank you Don't do it please!</p> <p>Classroom expressions</p>	<p>[S1] Social Skills [E5] Stick to a Task to Completion [C2] Imitate the Actions of others. [L2] Introduce themselves [P3] Fine Motor Skills</p>	<p>Autumn Cooking</p> <p>Autumn Painting</p>	<p>P&amp;T Conference</p> <p>School trip</p>

# OCTOBER & NOVEMBER

"LEARN FROM YESTERDAY. LIVE FOR TODAY.  
HOPE FOR TOMORROW." - ALBERT EINSTEIN



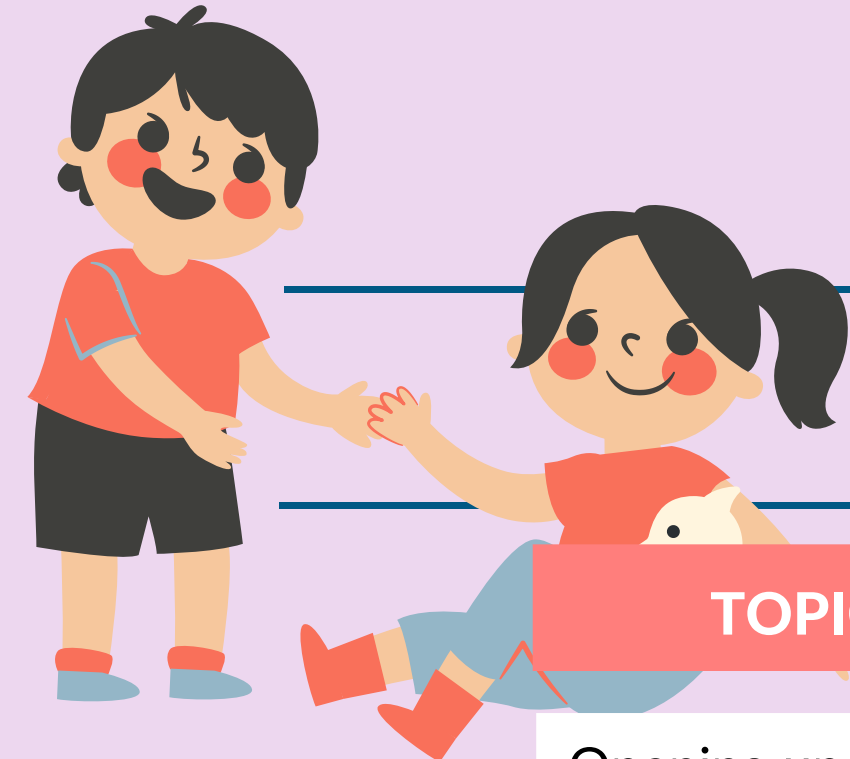
TOPIC	LANGUAGE	DEVELOPMENT	ACTIVITIES	EVENTS
Opening up to sharing Do you want to play? Who stole the cookies?"book for story time ★Sharing stories★ Songs/23,24,26,46 Halloween song	Can we share? Let's play! Can I have it? Yes (No) you can (can't)  Look at mine please. Show me please. Classroom expressions	[S2] Cooperate with Others [E1] Express Feelings [C2] Imitate the Actions of Others [L5] Recognize ABCs [P3] Develop Fine Motor Skills	Halloween Craft	Autumn Picnic  Halloween Party
Opening up to animals What a cool sound! Big,Small / Long,Short "My pet" "Open the window" books for story time ★Sharing stories★ Songs/24,26,32,46	What's that sound? I think it's... It's ...(animal) What animal says meow? One more time please!  Classroom expressions	[S1] Social skills [E5] Stick to a Task to Completion [C7] To enhance creativity [L8] Positivity [P6] Refine Listening Skills	Evacuation Drill  Make a Fall tree	Potato Digging  Start practicing for "School play 2025"  Potluck Party





# DECEMBER & JANUARY

“AND THEN I REALIZED WHAT YOU DO WITH AN IDEA.  
YOU CHANGE THE WORLD” -COBY YAMADA



TOPIC	LANGUAGE	DEVELOPMENT	ACTIVITIES	EVENTS
Opening up to family I love my family and t hey love me too! “Where is everyone? ” book for story time ★Sharing stories★ Songs/19,26,41,42,45 Christmas song	Where is my mom? This is my dad! She is (not) here. I’m sorry. It’s okay.  Adjectives Classroom expressions	[S6] Value Differences [E1] Express Feelings [C1] Recognize Objects, Animals, etc [L4] Count Numbers [P3] Develop Fine Motor Skills	Winter Painting  Christmas Craft  Christmas Cooking	Christmas Party
Opening up to review Self introduction  “Where is everyone ?” “Open the window” books for story time ★Sharing stories★ Songs/1-6,8-17,25,26	Thank you for sharing What’s wrong with?  Can I help you? Can you help me please? It’s a... (adjective + animal)	[S3] Respect Yourself [E3] Self-Understanding [C2] Imitate the Actions of Others [L2] Introductions [P4] Hand-eye Coordination	Growth Check  Evacuation Drill	Class Observations



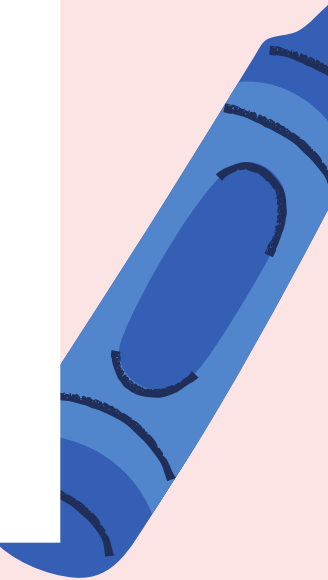
# FEBRUARY & MARCH



IN A WORLD WHERE YOU CAN BE ANYTHING,  
BE KIND – JENNIFER DUKES LEE



TOPIC	LANGUAGE	DEVELOPMENT	ACTIVITIES	EVENTS
Opening up to clothes / possession Whose..is this?  “Me myself” “Whose shirt ?” book for story time Songs/29,30,39,40	It’s cold. I’m hot. Let’s put on your jacket It’s too small It’s too big What color is your shirt? Who’s wearing...(color)?	[S5] Respect the Classroom [E5] Stick to a Task to Completion [C1] Recognition [L7]Name things [P5] Refine Visual Discrimination	Valentine’s Day Cooking	Bean Throwing  Evaluation  School Play
Opening up to me  I am me and I am special  “What can you do?” book for story time Songs/13,31,39,40,45	I can (can’t) do it! Stop please. I think I can.. Can you...(verb)?  Review of all classroom expressions	[S4] Respect Others [E5] Stick to a Task to Completion [C3] Decision Making [L2] Introducing [P6] Refine Listening Skills	Spring Painting  Rainbow flower craft	Excursion  Graduation





## 1. Ages:

- ① **Morning Preschool** :  
18 months ~ 6 years old
- ② **Afternoon Program**:  
3 years old ~ 15 years old

## 2. School Hours:

**Days**  
Monday~Friday  
**Hours**  
Early Arrival (8:00~9:45)  
Morning Preschool (10:00~14:30)  
Afternoon Class (15:00~18:00)

**Arrival**  
Morning Preschool (9:45~ )

**Pick-Up**  
Morning Preschool (14:20~14:45) Afternoon Class (16:55~/17:55~)  
※Please be punctual when dropping off and picking up your Child.

## 3. Parent-Teacher Conference & Class Observation

- ① Family members are welcome to attend on their Child's birthday, Halloween and Christmas classes.
- ② Parents/Guardians meeting with teachers will be held each year (see school calendar).
- ③ Additional Parents/Guardians meetings, lesson observations and/or counseling can be held as needed.

## 4. School Holidays:

- ① Saturdays, Sundays, public holidays, and substitute holidays.
- ② Fixed summer, winter, and golden-week holidays as decided by the school board (see school calendar).
- ③ Natural disasters, strikes of public transportation workers, and other events that make it impossible to attend school.
- ④ Lesson will finish 1 hour early 4 times a year for teachers' training.
- ⑤ Lessons will finish by 12:40 for private interviews (occurs on a couple of days in February).
- ⑥ We are proud to offer "Halloween and Christmas week events" respectively, which allow parents to attend as well. As our classroom size won't allow for all to attend on the same day, we will coordinate with you so that you and your child can attend one day for each of these two special-week events. Make-up lessons tickets will be provided to compensate for the day(s) you missed during these two special-week events.  
Note: If your Child is attending school more than 4 times with afternoon or short afternoon program per week then your Child is permitted to attend the Halloween and Christmas week events every day as there are no opportunities for make-up lessons in these cases.
- ⑦ As we offer our excursion on a Saturday each September, we will be closed on the following Monday to compensate for our usual Monday-Friday schedule.

## 5. Daily Activity Reports

- ① A "Daily Activity Report "will be given to Parents/Guardians at the end of each class day.
- ② In unforeseen circumstances, such as unexpected teacher absence, and when we have school events, the report may not be completed.
- ③ Reports may occasionally not be completed during our busiest months of January-March.

# Class Administration

## 6. Lunch and Snacks

①Lunch and snacks are not provided by the school. Children will be responsible for bringing their own lunches and snack.

**Note: Please do not give your children Konnyaku jelly, candy and All kinds of nuts to bring to school as these items bring with them adverse reactions that make it difficult to maintain a stable teaching environment.**

## 7. Diapers & Change of Clothes

①Parents and guardians are requested to prepare their Child's own diapers and changes of underwear as needed.

## 8. Tardiness and Absences

- ①Tardiness should be avoided. However, tardiness could be considered as acceptable under special circumstances.  
Absences would be discouraged unless there are medical reasons. Please encourage your child to participate.
- ②In the event of an absence, please inform the Administration Office as timely as possible.
- ③Maintaining a positive and effective learning environment is the school's emphasis. Please note that the student may be expelled if absenteeism continues for more than 3 months.
- ④If your Child is sick or is taking medicine to recover from sickness, we can accept their attendance ONLY if they have a "Doctor's note" or if they are dealing with a long-term chronic illness. If your Child is sick under any other circumstances, we cannot accept their attendance until they are fully recovered.

## 9. Make-up Lessons

- ①Make-up tickets may be arranged for the following reasons only:
- Absence due to medical reasons (for example; cold).
  - Medical examinations
  - School closed due to natural disasters ※1
  - Kindergarten and Elementary School related affairs (information sessions and interviews).
  - Make-up tickets can only be used for our morning preschool. Unfortunately, we cannot accept tickets for any other class.
  - If you receive make-up tickets, they can only be used at the same school your Child is attending.
  - If you receive make-up tickets, **they must be used before your Child's graduation in March.** Further, we cannot decrease your Child's weekly schedule to accommodate excess make-up tickets you may have, which means you need to use these tickets during your Childs "off days".



## 10. Change of Address and Phone Number

①The "Change of Address or Telephone Number" form should be filed as soon as any address and/or phone Number is made.

## 11. Temporary Leave of Absence

- ①A "Temporary Leave of Absence Notification (TLAN)" form must be filed with the class instructor. Forms are availablefrom the class instructor. Notification must be filed 2 months before the leave of absence is to commence.  
Example: If the leave of absence is to start from the end of march, notification (via TLAN form) must be received no later thanthe end of January.  
After a temporary leave of absence is recognized and recorded, 50% of the corresponding tuition will be waived for the duration of the absence.  
Note: If the notification is received at a date later than 2 months prior to the start of the absence, the full monthly automatic deduction will be received for the month following the leave of absence. In this case, all fees collected are non-refundable.
- ②In order to preserve the positive and effective learning environment, we reserve the right to restrict temporary leave of absence to a maximum of 3 months. For temporary leaves of more than 3 months, a monthly administration fee will be charged from the fourth month of absence in order to maintain a place in the school.
- ③If your Child is absent for more than 30 days, we require a "Doctor's certificate"to be given to your class instructor. In these cases, tuition already charged or to-be charged will be adjusted accordingly in the following month.

## 12. Termination

- ①A "Termination Notification (TN)" form must be filed with the class instructor. Forms are available from the class instructor
- ②Monthly tuition for the following month will not be charged from our automatic deduction system IF notification (via TN form) is presented to class instructor 2 months before your Child's last class is to take place.  
Example: If Termination is to start from the end of March, notification (via TN form) must be no later than January.  
Note: If the notification is received at a later date, the monthly automatic deduction will be received for the month following termination.  
In this case, all fees collected are non-refundable.

## 13. Request to Withdraw

①Please note that the school has the right to request a student to withdraw if tuition is not received within 20 days of classes starting. A written statement will be mailed to you to collect any overdue monthly tuition and/ or textbook fees

# Monthly Tuition and Textbook Fees (Tax Included)

## 1. Monthly Tuition

①Morning Preschool Monthly Tuition

**Morning class (10:00~14:30)**

¥47,500 (2days/week)

¥69,500(3days/week)

¥86,000(4days-5days/week)

**Morning class 8 hours a day (10:00-18:00 or 9:00-17:00):**

¥43,100 (1day/week)

¥82,700(2days/week)

¥122,300(3days-5days/week)

**Morning class 7 hours a day (10:00-17:00 or 9:00-16:00):**

¥36,500 (1day/week)

¥69,500(2days/week)

¥102,500(3days-5days/week)

Afternoon	1 day / week	2 days / week	3 days / week
-----------	--------------	---------------	---------------

90 min class	¥13,100	¥25,200	¥30,700
120 min class	¥17,500	¥34,000	¥45,000
150 min class	¥19,700	¥38,400	¥50,500
180 min class	¥21,900	¥42,800	¥56,000

\*Payment method : Payment is made by automatic deduction on the 27th of each month. (Receipt of payment managed by Mitsubishi UFJ Nicos Co. LTD)

**Example:**The monthly tuition for April will be collected by automatic deduction on March 27th

①Enrollment fee: Preschool( ¥ 88,000) After-school( ¥ 22,000) at the time of enrollment.

②Total annual fees: ¥22,000 at the time of enrollment.

\*Payment method: Fees including enrollment and annual fees (and possibly 1st month's tuition depending on when when you enroll) will be charged on the first day of classes OR at the time of enrollment.

\*Note: From the following year, payment of these annual fees will be charged by automatic deduction at the turnof the fiscal year.

●Example: Assuming the class begins in April, payment of fees including monthly tuition will be collected by automatic deduction on March 27th.

●Enrollment and Annual fees are also payable in installments throughout the year between months 2-12.

## 3. Payment Method

## 4. Late Payments

①Additional charges due to late monthly tuition and textbook fees will be collected as specified by the school.

## 5. Early Drop Off / Late Pick Up

①For early drop-off's or late pick-up's of your Child, we charge in 15-minute increments at a rate of ¥ 540/15minutes.

**Note:** In such an instance, the assistant will confirm the total-time that day which will be added to your following month's tuition.

## Appendix

### Early arrival

45 minutes	60 minutes	90 minutes	120 minutes
¥ 19,700	¥ 23,000	¥ 26,300	¥ 28,500

①In the event that an automatic deduction cannot be made from a designated bank account due to incomplete bank procedures or due to changes of the bank account, the school will grant a short period of time for the problem to be remedied.

②"Changing your Child's schedule" If you need to change your Child's schedule, we require 2 weeks advance notice. For example, changing your Child's schedule on December 16 requires you to notify us no later than December 1.

③As the Hello Kids calendar year allows for certain days to be missing, you can use our make-up ticket system to compensate.

**\*Reminder:** Please refer to our make-up ticket system to compensate for missing days that do not equal 44 in total.

④"Our Brush-up and Green class program" (For regular full time students only <minimum 4 days per week>) As a student of this program, we provide special benefit such as: 1. Be able to join "Picinic in November(only for Green class)" "Bus trip in March"

Note: Lessons offered every Saturday(see school calendar). Note: You can attend every class or as a spot (one-time spot in) student.

⑤These school rules and regulations are effective as of Mar 31, 2014.

※1 Revised Feb, 1st 2022

⑥Any future rules and regulation changes will be notified in writing.

⑦●If you want to decrease your Child's weekly schedule, "Notification of Schedule Change (NSC)" must be filed with the class instructor two (2) months before the actual date-change is to begin.

●If you want to increase your Child's weekly schedule, "Notification of Schedule Change (NSC)" must be filed with the class instructor two (2) weeks before the actual date-change is the begin.

## 2. Enrollment, Annual Fees (including textbooks) and Tuition

ths Tuition Enrollment fee tends classes on the first day installments throughout the







## 1. 対象年齢:

- ① モーニングクラス:  
1歳6ヶ月～6歳
- ② アフタースクール:  
3歳（幼稚園年少）～中学生

## 2. レッスン日・時間

曜日  
月曜日～金曜日

時間  
早朝保育（8:00-9:45）  
プリスクール(10:00-14:30)  
アフタースクール(15:00-18:00)

アライバル  
モーニングプリスクールアライバル(9:45ドアオープン)

ピックアップタイム  
ピックアップタイム(14:20-14:45)  
アフタースクール (16:55/17:55)  
(レッスン開始/終了の5分前)

## 3. 保護者会、 レッスン見学会等

- ①お子様の誕生日、ハロウィーン、クリスマスは所定の日・時間帯に保護者も参加ができます。（モーニング/園児クラス）
- ②保護者会は年1回行なわれます。〔カレンダー参照/モーニングクラス〕
- ③必要に応じて、随時、保護者会、カウンセリングを行ないます。

## 4. スクールが お休みの日:

- ①土・日曜日、国民の休日、振替休日。
- ②スクールの指定する夏休み・冬休み・ゴールデンウィーク。〔カレンダー参照〕
- ③天災・天災により生じた交通機関の遅延等・交通ストライキなど不可抗力による休講。
- ④年に数回、スタッフ研修会のため保育を1時間早く終了させていただきます。
- ⑤「Evaluation」の発行と個別面談が行われる数日間は保育が12:40までとなります。〔毎年2月に3日程度/モーニングクラス〕
- ⑥ハロウィン・クリスマスウィーク期間中・週5モーニング/週5ショートフル/週5フルデイ参加生徒以外は1日のみの参加、それ以外の参加日はお休みとなります。  
※お休みされた日数分の振替チケットを発行します。

## 5. 毎日の アクティビティの 記録

- ①毎日のレッスン終了時に親/保護者の皆様に毎日のアクティビティの記録の報告とけがの記録
- ②スタッフの急な病欠等によりスタッフ数が十分でないと判断した際、イベント等実施日、または不可抗力が生じた場合はレポートをお休みさせていただきます。（モーニングクラス）
- ③レッスンの集中する「1～3月」は可能な限り振替を受付け、保育を最優先とし、レポートをお休みとさせていただく場合があります。（モーニングクラス）



# 教室運営

## 6. 昼食、スナック

①原則として、昼食は提供いたしませんのでお子様にランチを持参いただきます。（モーニングクラス）

②スナックタイム時のスナックは持参いただきます。（蒟蒻ゼリー・キャンディー・ナッツ類はご遠慮下さい）

## 7. オムツ等

①オムツや換えの下着等は親／保護者の皆様にご用意いただきます。（モーニングクラス）

## 8. 遅刻、欠席

①遅刻は望ましいことではありませんが、事情がある場合遅れても構いません。参加させてください。連絡がない場合、特に病欠の場合振替の対象となりません。

②欠席の場合は事務局かスタッフまで必ず連絡してください。

③より良い学習環境と学習効果を最優先に考えておりますので、3ヶ月以上欠席が続いた場合は退会とさせていただくことがありますのでご了承ください。

④薬持参での参加はできません。但し、ドクターの診断書がある場合と持病等の常備薬は例外とします。

## 9. 振替

①振替レッスンは下記の場合のみ受け付けます。

- 体調不良による欠席〔風邪等の病欠〕
- 健康診断〔歯科検診等は対象となりません〕
- 天災により休講となったレッスン ※1
- 幼稚園・小学校等の説明会・受験等〔慣らし保育は対象となりません〕
- モーニング⇄アフタヌーンクラスの振替はできません〔週5日コース参加者は振替可能〕
- 平日のレッスンの振替を土曜日に消化することはできません。
- 振替の残日数の年度内消化が目的の〔特に1～3月〕参加日数変更はできません。

## 10. 住所、電話番号の変更

①入会時にお届けの住所、電話番号に変更があった場合は「変更届」を提出ください。

## 11. 休会

①スタッフに「休会届」を提出してください。〔休会届はスタッフが持参しています〕

②「休会届」が休会希望月の前々月の最終レッスンまでにスタッフに提出された場合、休会希望月より休会扱いとさせていただき月謝を50%免除いたします。それ以降に提出された場合、休会希望月の翌月より休会扱いとさせていただきます。（出産に伴う休会のみ全額免除）

③より良い学習環境と学習効果を最優先に考え、休会は最長でも3ヶ月をメドと考えています。4ヶ月目以降からは、通常の月謝請求となります。

④病気・怪我等による欠席が30日以上におよぶ場合、医師の診断書提出の上、スタッフに申請ください。休会扱いとして対象期間の月謝は全額免除いたします。既に振替となっている月謝は復帰時の月謝請求で調整いたします。欠席日数は標準カレンダーに準じます〔スクールレッスン日数によるカウントではありません〕

①退会の申し出は退会希望月を含む2ヶ月前までにスタッフに「退会届」を提出、もしくは申告ください。

## 12. 退会

●例：2月末で退会の場合、1月の最終参加日までに「退会届」がスタッフに提出。これ以降に申し出がありましても3月分月謝は振替となり、返金はできません。3月末での退会となります。

## 13. 退会勧告

①月謝およびテキスト費を1回分でも遅滞し、スクールからの書面による督促を受け、20日以上経過後も支払いを遅滞している場合は退会勧告を行なうことがありますのでご注意ください。



# 参加費用とお月謝について

## ■プリスクールモーニング（４時間半/10:00-14:30/入会金88,000円/年間諸経費22,000円■

- ・ 8,700円（スポット参加費用/1回）
- ・ 47,500円（週2回）・ 69,500円（週3回）
- ・ 86,000円（週4回/週5回共通）

## ■プリスクールモーニング（７時間コース/入会金88,000円/年間諸経費22,000円■

- ・ 36,500円（週1回/9:00-16:00または10:00-17:00）
- ・ 69,500円（週2回/9:00-16:00または10:00-17:00）
- ・ 102,500円（週3回-週5回共通/9:00-16:00または10:00-17:00）

## ■プリスクールモーニング（８時間コース/入会金88,000円/年間諸経費22,000円■

- ・ 43,100円（週1回/9:00-17:00または10:00-18:00）
- ・ 82,700円（週2回/9:00-17:00または10:00-18:00）
- ・ 122,300円（週3回-週5回共通/9:00-17:00または10:00-18:00）

## ■延長・早朝保育月極追加費用（プリスクールに週5日お通いの方限定）■

- ・ 19,700円（毎回45分）・ 23,000円（毎回60分）・ 26,300円（毎回：90分）・ 28,500円（毎回120分）

## ■アフタースクールクラス（90分～180分/入会金22,000円/年間諸経費22000円）■

- |         |              |   |              |   |              |
|---------|--------------|---|--------------|---|--------------|
| 90分コース  | 13,100円（週1回） | / | 25,200円（週2回） | / | 30,700円（週3回） |
| 120分コース | 17,500円（週1回） | / | 34,000円（週2回） | / | 45,000円（週3回） |
| 150分コース | 19,700円（週1回） | / | 38,400円（週2回） | / | 50,500円（週3回） |
| 180分コース | 21,900円（週1回） | / | 42,800円（週2回） | / | 56,000円（週3回） |

## ■スポット参加料金（前日までにスクールスタッフまでご連絡ください）■

プリスクールモーニング（10:00-14:30）：8,700円

早朝・延長保育（1回単位/9:45アライバルより前と14:45のピックアップ以降）：15分/550円

## ■土曜日グリーンクラス（未就学児対象/10:00-14:30）■

- ・ 入会金：22,000円
- ・ 月謝：23,000円（週1回/土曜日）
- ・ スポット参加と延長料金は上記「スポット参加料金」に同じ

## ◎弟妹入会の特典

- ・ モーニングプリスクール→入会金：88,000円が全額免除
- ・ アフタースクール→入会金：22,000円が全額免除
- ・ ご兄弟でのモーニングプリスクール同時期在籍→お一人分のお月謝が毎月20%オフ





# Hello Kids Preschool 2025-2026

## 4月・APR

SUN	MON	TUE	WED	THU	FRI	SAT
		1	2	3	4	5
6	7	8	9	10	11	12
13	14	15	16	17	18	19
20	21	22	23	24	25	26
27	28	29	30			

## 5月・MAY

SUN	MON	TUE	WED	THU	FRI	SAT
				1	2	3
4	5	6	7	8	9	10
11	12	13	14	15	16	17
18	19	20	21	22	23	24
25	26	27	28	29	30	31

## 6月・JUN

SUN	MON	TUE	WED	THU	FRI	SAT
1	2	3	4	5	6	7
8	9	10	11	12	13	14
15	16	17	18	19	20	21
22	23	24	25	26	27	28
29	30					

## 7月・JUL

SUN	MON	TUE	WED	THU	FRI	SAT
		1	2	3	4	5
6	7	8	9	10	11	12
13	14	15	16	17	18	19
20	21	22	23	24	25	26
27	28	29	30	31		

## KEY



新学期準備日



サマー  
スクール



ハロウィン  
ウィーク



クリスマス  
ウィーク



保護者会



卒業式



ピクニック

(プリスクール/  
グリーンクラス)  
雨天の際は11月19日に延期



バス遠足

## 8月・AUG

SUN	MON	TUE	WED	THU	FRI	SAT
					1	2
3	4	5	6	7	8	9
10	11	12	13	14	15	16
17	18	19	20	21	22	23
24	25	26	27	28	29	30
31						

## 9月・SEP

SUN	MON	TUE	WED	THU	FRI	SAT
	1	2	3	4	5	6
7	8	9	10	11	12	13
14	15	16	17	18	19	20
21	22	23	24	25	26	27
28	29	30				

## 10月・OCT

SUN	MON	TUE	WED	THU	FRI	SAT
			1	2	3	4
5	6	7	8	9	10	11
12	13	14	15	16	17	18
19	20	21	22	23	24	25
26	27	28	29	30	31	

## 11月・NOV

SUN	MON	TUE	WED	THU	FRI	SAT
						1
2	3	4	5	6	7	8
9	10	11	12	13	14	15
16	17	18	19	20	21	22
23	24	25	26	27	28	29
30						

お花見 (全クラス対象)

スポーツデー (全クラス対象)

おイモ掘り (全クラス対象)

ピクニック (全クラス・

グリーンクラス対象)

オープンクラス 8月 ピンククラスのみ

1月 (全クラス対象)

## 12月・DEC

SUN	MON	TUE	WED	THU	FRI	SAT
	1	2	3	4	5	6
7	8	9	10	11	12	13
14	15	16	17	18	19	20
21	22	23	24	25	26	27
28	29	30	31			

## 1月・JAN

SUN	MON	TUE	WED	THU	FRI	SAT
				1	2	3
4	5	6	7	8	9	10
11	12	13	14	15	16	17
18	19	20	21	22	23	24
25	26	27	28	29	30	31

## 2月・FEB

SUN	MON	TUE	WED	THU	FRI	SAT
1	2	3	4	5	6	7
8	9	10	11	12	13	14
15	16	17	18	19	20	21
22	23	24	25	26	27	28
29	30					

## 3月・MAR

SUN	MON	TUE	WED	THU	FRI	SAT
1	2	3	4	5	6	7
8	9	10	11	12	13	14
15	16	17	18	19	20	21
22	23	24	25	26	27	28
29	30	31				

※8月度レッスンの自由参加、振替特例について (全曜日、  
全生徒対象)

8月分のレッスンは1曜日につき4日分を欠席理由にかかわ  
らず振替レッスンとして参加可能です。

サマースクールや皆様の帰省、ご家族の予定等を考慮し、  
お好きな月や週に変更可能なレッスンが振替分として保障  
されますので、他の月や8月後半にまとめてご参加くださ  
い。

(例：週2回参加のモーニング生徒の場合→計8日分の振替  
がお好きな日程で振替参加可能)